



Presentation to the
**Children Youth and Families
Department**

April 14, 2014

New Mexico Human Services Department



New Mexico Human Services Department

Mission

To reduce the impact of poverty on people living in New Mexico by providing support services that help families break the cycle of dependency on public assistance

Income Support Division / ISD

Child Support Enforcement Division / CSED

Medical Assistance Division / MAD

Behavioral Health Services Division / BHSD



New Mexico Human Services Department

The New Mexico Human Services Department (HSD) manages a \$5.43 billion dollar budget of state and federal funds and administers services to more than 800,000 low-income New Mexicans through public assistance programs.

Our Focus for Today's Presentation

Income Support Division - The mission of the Income Support Division is to relieve, minimize or eliminate poverty and to make available certain services for eligible low-income individuals and families through statewide programs of financial assistance, food assistance, employment assistance and training services.

Medical Assistance Division - The HSD's Medical Assistance Division (MAD) is the direct administrator of New Mexico's Medicaid program, including its managed care program known as Centennial Care program.



**Human Services Department
Income Support Division**

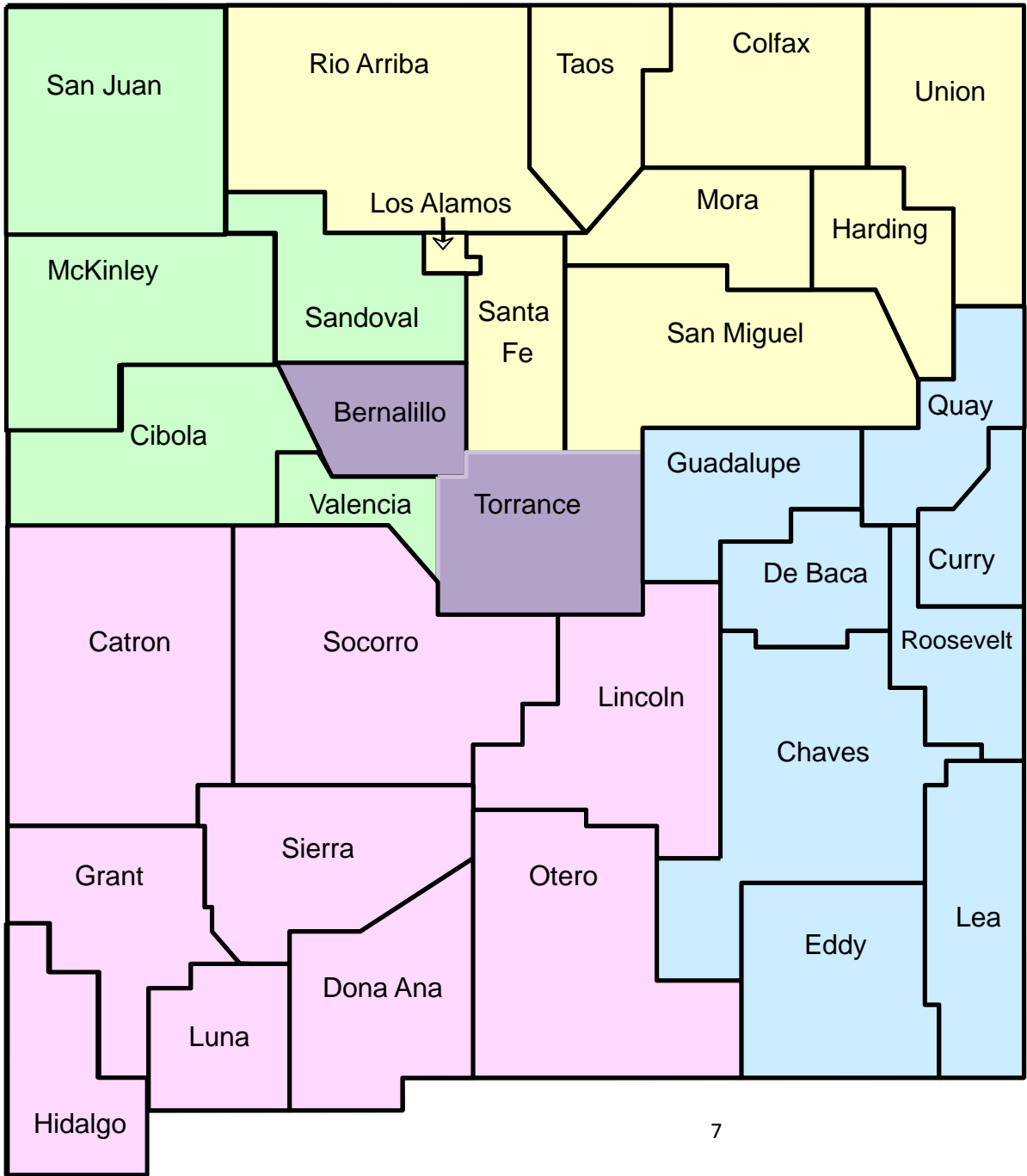
Income Support Division

ISD assists low income New Mexicans with various programs including Supplemental Nutrition Assistance Program (SNAP), Cash Assistance, Medical Assistance, Energy Assistance, and Medicare Savings Programs (MSP).



ISD Programs

- ✓ **MEDICAID** – 5 standard Categories of Eligibility and specialized eligibility for the Aged, Blind, and Disabled.
- ✓ **Medicare Savings Program (MSP)** – Qualified Medicare Beneficiaries (QMB), Specified low income Medicare Beneficiaries (SLIMB), and Qualified Individuals (Qi1)
- ✓ **SNAP** – Supplemental Nutrition Assistance Program, Transitional Food Stamps (TFS), New Mexico Combined Application Project (NMCAP), and State Food Stamp Supplement for the Elderly and Disabled
- ✓ **CASH** – Temporary Assistance to Needy Families (TANF), General Assistance Disability (GA), Education Works, General Assistance unrelated child, Adult Residential Supplemental Care Home Program (ARSCH), Refugee Resettlement Program, and Burial Assistance
- ✓ **ENERGY** – Low Income Home Energy Assistance Program (LIHEAP)



ISD Regions

- NW Region I
- NE Region II
- Central Region III
- SE Region IV
- SW Region V



Income Support Division What's NEW

What's New in ISD

- Developed and implemented a replacement computer eligibility system to administer eligibility determination for receiving benefits in the food, cash, energy and Medicaid programs:

ASPEN-Automated System Program and Eligibility Network.



- Converted to a *'paperless'* division. We are now using a process for scanning all documents and maintaining them in an Electronic Case File.
- Established a Customer Service Information Line where a customer can call 24 hours a day, 7 days a week.
- Launched YES-New Mexico, an internet web based self-service portal where customers can apply for benefits, check their benefits, renew their benefits, and report changes to their case.
- Developed and improved the HSD Web Page into a user friendly easy to follow format.

ISD Information Line 24 / 7

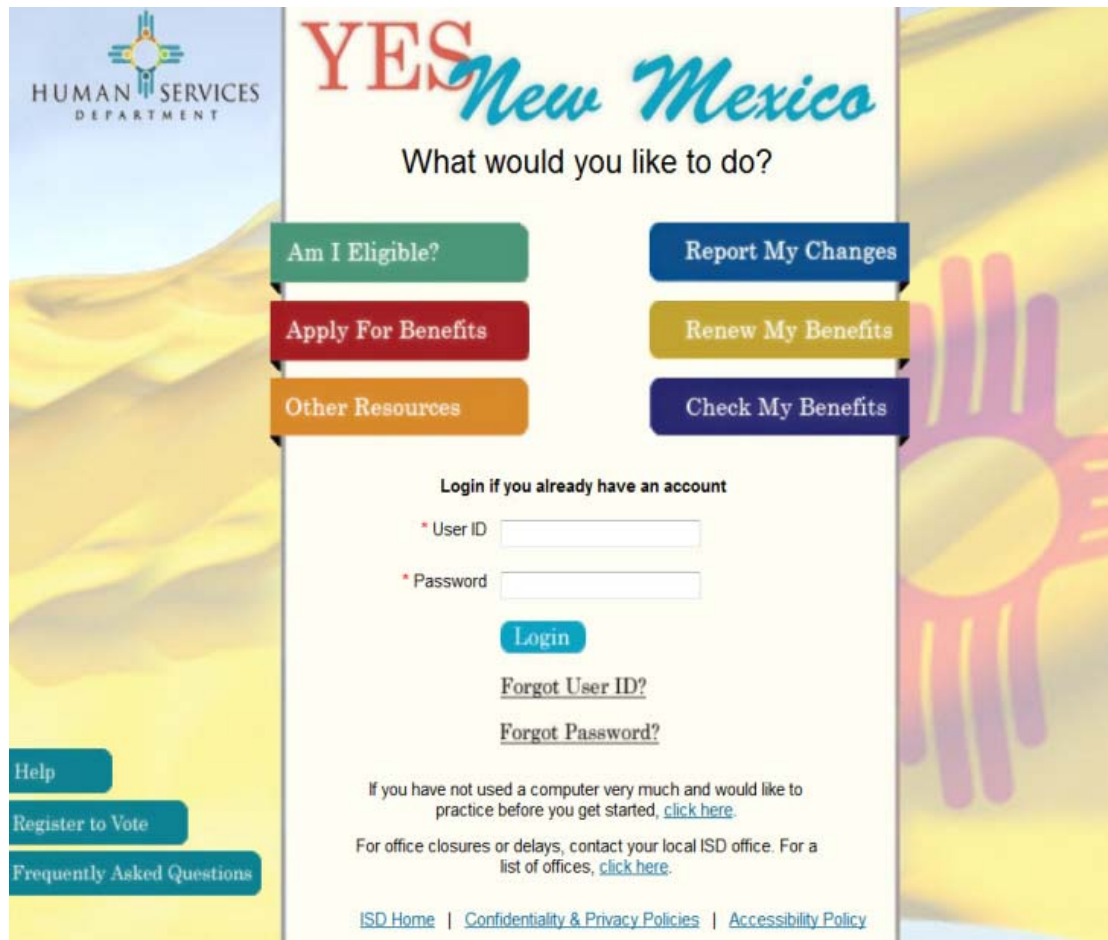
Income Support Division Information Line 1-855-309-3766 (1-855 30-YESNM)



- The ISD Information Line provides basic information about assistance programs offered by ISD such as Cash, Food and Energy Assistance and Medicaid. It also provides specific information on the case. The information is provided in both English and Spanish to better serve New Mexico residents.
- The ISD Information Line allows New Mexicans to check details of their case. These details include the status of the case, benefit amounts, any upcoming appointments, or pending documents needed for case processing.
- The Interactive Voice Response (IVR) system is available 24 hours a day/7 days a week.
- Dial 1-855-309-3766 and select the correct option to obtain the information needed
- The head of household's social security number or individual identification number is needed to access case information

YES – New Mexico/Your Eligibility System NM

Applicants may use New Mexico’s new Self-Service Eligibility Portal at www.yes.state.nm.us to apply for public assistance benefits such as Medicaid, SNAP, cash assistance, and LIHEAP (energy assistance)



YES – New Mexico



How do I access YES-NM? It is simple: 1) click on your Internet Explorer icon, 2) type www.yes.state.nm.us in your internet browser, 3) create an account or login into an existing account, 4) link your account and 5) select the appropriate button depending on the action you want to take.

How long does it take to apply? It depends on many factors (number of household members, income sources, benefit categories applying for and resources). On average, completing an application takes about 45 minutes.

Can I finish my application at another time? Yes. YES-NM prompts you to create a username and password so that you can start & stop and access your application at a later time to complete it.

What types of changes can I report on YES-NM? YES-NM displays a list of changes you can make including changes in income, expenses, household composition, death, births, address, and marital status.

How do I “Renew My Benefits”? This button only displays for recipients who are due for a recertification in the following month. You can renew all or your benefits at the same time. If you have different case numbers, you will need to renew each case number separately

YES - New Mexico



What information can I get using “Check My Benefits”? This section displays the status of your benefits, any upcoming or missed appointments, any outstanding verifications needed, and the status of any Change Reports, Recertification or Fair Hearing requests. It also provides information on any applications submitted including the application number, the date submitted, application details and the status of application.

Can I scan or upload my eligibility verifications using YES-NM? Yes. If you scan or upload required verifications (i.e. proof of income), the Human Services Department will be able to process your application more quickly.

Can I still apply using a paper application? Yes. Paper applications may be dropped off at your local HSD office. You may also mail them to: Central ASPEN Scanning Area P.O. Box 830 Bernalillo, NM 87004. For Medicaid only applications, call the Medicaid Expansion Hotline at **1-855-637-6574**.

YES - New Mexico



“ Kiosks” or computer stations have been established in the front lobbies of all ISD Offices.

Offices have staff available to assist with using the computer and learning how to use YES-NM. Scanners are connected to the kiosks where customers can upload and attach documents to applications or files automatically.

‘How-to’ posters, placemats, pamphlets, and handouts are prominently located in the lobby waiting area, by the kiosks, and at the greeter stations.

NM Human Services Department **New** Web Page

The screenshot shows the top portion of the NM Human Services Department website. At the top left is the department logo, which consists of a stylized human figure with arms and legs raised, surrounded by a circular emblem with four colored segments (blue, green, yellow, red). Below the logo, the text "HUMAN SERVICES DEPARTMENT" is displayed. To the right of the logo is a navigation menu with links for "Home", "About Us", "Health Care Reform", "Public Information", and "Contact Us". Further right are social media icons for Facebook, Twitter, and a search icon. Below the navigation menu are three main navigation buttons: "Looking For Assistance", "Looking For Information", and "Providers". A large red-bordered box with the text "Easy to click and navigate" is positioned over the "Looking For Assistance" button. Red arrows point from this box to the "About Us" link in the top navigation menu, the "Looking For Assistance" button, the "Looking For Information" button, and the "Looking for Assistance" button in the "WHAT ARE YOU LOOKING FOR?" section. Below the navigation buttons is a large photograph of a smiling woman and a young girl. Below the photograph is the section "WHAT ARE YOU LOOKING FOR?" with three buttons: "Looking for Assistance", "Looking for Information", and "Provider Information". At the bottom of the page are three featured content boxes. The first box is titled "Centennial Care" and features a small image of a child's profile. The second box is titled "Build Your Future" and features a small image of a man and a child. The third box is titled "Office of the Secretary" and features a small portrait of Secretary Sidonie Squier. Each box contains a brief description and a link to learn more.

Easy to click and navigate

Home About Us Health Care Reform Public Information Contact Us f t q

Looking For Assistance | Looking For Information | Providers

WHAT WE DO

Reduce the impact of poverty by providing support services that help families break the cycle of dependency on public assistance.

WHAT ARE YOU LOOKING FOR?

Looking for Assistance Looking for Information Provider Information

Centennial Care
The vision for care in New Mexico.
[Learn more about Centennial Care.](#)

Build Your Future
[Click here for information on work readiness and to register to vote.](#)

Office of the Secretary
Secretary Sidonie Squier has served since January 2011.
[View more about Secretary Squier.](#)

NM Human Services Department **New** Web Page

Home About Us Health Care Reform Public Information Contact Us f t w

Looking For Assistance | Looking For Information | Providers

LOOKING FOR ASSISTANCE

The mission of the Human Services Department (HSD) is to reduce the impact of poverty on people living in New Mexico by providing support services that help families break the cycle of dependency on public assistance.

Looking for Assistance Overview




- Apply For Benefits
- Health Coverage
- Child Support
- Food Assistance
- Income Support
- Build Your Future
- Report Fraud

Apply For Benefits

You may apply for public assistance using one of the below options. Once you have successfully submitted an application you will be contacted by the Human Services Department regarding the next steps to take. For more information on individual programs, please use the menu on the left.

Usted puede solicitar asistencia pública utilizando uno de los siguientes opciones. Cuando usted ha enviado correctamente una aplicación usted será contactado por el Departamento de Servicios Humanos en relación con los pasos a seguir. Para obtener más información sobre los programas particulares, por favor utilice el menú a la izquierda.

Coming Soon!

Apply on the Web	Download and Mail	Visit Your Nearest
		
Yes New Mexico	Application	Field Office
	Aplicación Español	
	Medicaid Only	
	Sólo Medicaid	
Child Support Online	Child Support Forms	Child Support Field Offices

Resources to help you apply for assistance and check the details of your case

Yes New Mexico assistance	Yes New Mexico asistencia
Check the details of your case	Compruebe los detalles de su caso

Easy to understand

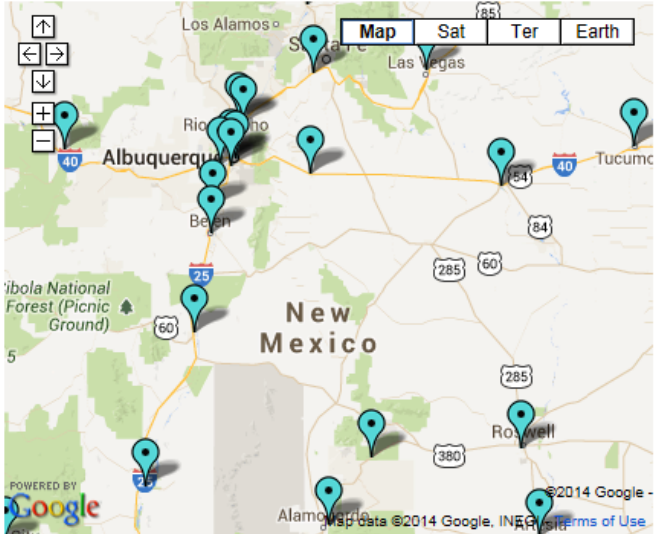
Simply click to get what you need.

NM Human Services Department **New** Web Page

- Food Assistance >
- Income Support <**
 - Income Support Overview
 - Community Assistance and Community Services Block Grant
 - General Assistance for Disabled Adults and Unrelated Children
 - Low Income Home Energy Assistance Program
 - Refugee Resettlement Program
 - Temporary Assistance for Needy Families
- Field Offices**
- Build Your Future >
- Report Fraud

Click on a county for local ISD contact information or scroll down for all offices:

Hours of operation are listed: except for national holiday closings.



View [NMHSD Income Support Field Offices](#) in a larger map

and / or

Bernalillo County (Albuquerque Area)

Address
If you live in the Northwest part of the County/City
1041 Lamberton Place NE
Albuquerque, NM 87125

Easily locate the office closest to you





Medical Assistance Division



Centennial Care Overview



New Mexico's new Medicaid managed care program, Centennial Care, was implemented on January 1, 2014.

Four Managed Care Organizations provide the full spectrum of integrated healthcare services, including physical, behavioral and long term care services:

- Blue Cross/Blue Shield
- Presbyterian Health Plan
- Molina Healthcare of New Mexico
- UnitedHealthcare of New Mexico

MCO Selection and Assignment

Recipients may choose an MCO at the time of application.

If a recipient does not select an MCO, the Medicaid system (OmniCaid) auto-assigns him or her to an MCO.

There are special provisions for Native American enrollment:

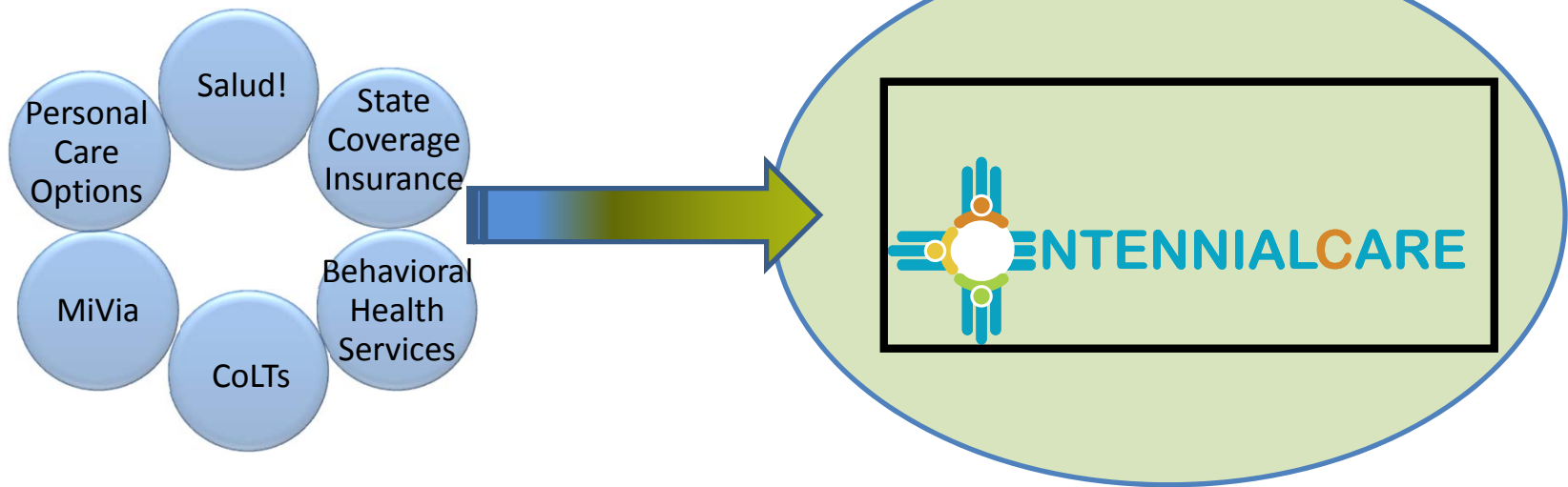
- Native Americans who are eligible for both Medicaid and Medicare or who require long-term care must enroll in a Centennial Care MCO.
- Other Native Americans may enroll in an MCO or choose to have their care provided on a fee-for-service basis.

Key Components of Centennial Care

- Integration of all benefits provided through one managed care system from birth to end of life
- Comprehensive care coordination system
- Focus on health literacy using community health workers, community health representatives, promotoras and other trained lay-workers
- Development of Health Homes
- Further development of patient-centered primary care medical homes (PCMHs)
- Involve members in their own wellness with a Member Rewards Program

Centennial Care

Provides recipients with the right care, at the right time, in the right setting



Fee-for-Service

Native Americans have the choice to receive services through Fee-for-Service or from a Managed Care Organization unless in need of long-term services



Why is **Centennial Care** good for New Mexico?

- It offers innovative strategies without reducing eligibility or healthcare services, or negatively impacting providers;
- It aligns incentives in the system so that all parties—the state, the plans, the providers and the recipients—are working towards the same goal of better health outcomes at less cost;
- It places New Mexico among the leading states in the design and implementation of a modern, efficient Medicaid program;
- It ensures that care is measured in terms of quality and not solely by quantity.



New Adult Expansion Program

Other Adult

The benefit package for the new adult expansion population is called the Alternative Benefit Plan (ABP) and is different than state plan Medicaid benefits.

Who Is Eligible?

- An individual age 19 to 65
- Cannot be entitled to or eligible for Medicare
- Meet all non-financial eligibility requirements
- Have countable Income less than 133% of the Federal Poverty Level (FPL) for the household size



Alternative Benefit Plan (ABP)

- Most new adults in this category will receive an Alternative Benefit Plan (ABP). It will cover all 10 “essential health benefits”.
- Benefit information can be located at:
<http://www.hsd.state.nm.us/LookingForInformation/client-co-payments.aspx>
- Medicaid recipients in this category who have special health care needs may qualify to receive a higher benefit package such as Standard Medicaid services.
- Individuals who think they have special health care needs should contact their Centennial Care managed care organization (MCO).
- Native American individuals who are not enrolled with a Centennial Care MCO should call the Molina Third-Party Assessor (TPA) toll-free at (866) 916-3250.
 - They will help to determine if the individual has special health care needs and is eligible to receive Standard Medicaid services.

Alternative Benefit Plan (ABP)

- Medically frail adults exempt from ABP
 - Can receive either ABP or Medicaid State Plan services
- Medically frail definition:
 - Disability or blindness
 - Hospice
 - Chronic substance use disorder
 - Serious mental illness
 - Assistance with one or more activities of daily living



Parent/Caretaker Category

Parent/Caretaker

Who Is Eligible?

- Must be a natural, step or adoptive parent of a child, provided they live with the child
- When the parent(s) do not live with the child, specified relative(s) within the fifth degree of relationship by blood, marriage or adoption- as determined by NMSA 45-1-101 through 45-1-404, the Uniform Probate Code
- Meet all non-financial eligibility requirements
- Households with countable Income less than the income standard for the household size

Children Category

Children

Who Is Eligible?

- Under nineteen years of age
- Meet all non-financial eligibility requirements
- Children ages 6-18:
 - Have countable income less than 240% of FPL
 - Cannot have private health insurance if the countable income is between 190% and 240% FPL
- Children ages 0-5:
 - Have countable income less than 300% of FPL
 - Cannot have private health insurance if the countable income is between 240% and 300% FPL

Pregnancy and Newborn Related Services

Pregnancy Medicaid or Full Coverage Pregnancy

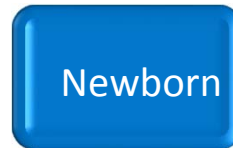
- A woman who is pregnant & Meet all non-financial eligibility requirements



- Have countable Income less than **250% of FPL** for the household size



- Have countable Income less than **47% of FPL** for the household size



Newborn Medicaid

- Infants born to mothers who are eligible for and receiving New Mexico Medicaid at the time of birth
- Mothers deemed to have been eligible for and receiving New Mexico Medicaid at the time of the birth

Transitional Categories

Transitional
Earned/Spousal
Support

Two categories for Transitional:

- Loss of Parent Caretaker Medicaid due to Spousal Support
- Loss of Parent Caretaker Medicaid due to Earnings From Employment

To be Medicaid eligible a recipient must:

- Have received Parent Caretaker Medicaid in at least one month of the six months prior to ineligibility for the Parent Caretaker Medicaid
- Have lost Parent Caretaker Medicaid wholly or in part due to new or increased spousal support or earnings from employment
- Have at least one Medicaid eligible dependent child living in the home
- Continue to meet all non-financial eligibility

What is MAGI?



Modified Adjusted Gross Income

- MAGI is a methodology for how income is counted and how household composition and family size are determined
- MAGI is not a number on a tax return
- MAGI is based on federal tax rules for determining adjusted gross income (with some modification)
- No asset test or disregards (except a 5% FPL disregard based on category of eligibility)

Definitions of Income



General rule as tax definitions:

- Taxable income is counted.
- Non-taxable income is not counted.

Key differences compared to current Medicaid methods:

- Child support income received is not counted.
- Self-employment and farm income after depreciation and deduction of capital losses counted.
- Scholarships, fellowship grants and awards used for education purposes is not counted.
- American Indian and Alaska Native (AI/AN) income derived from distributions, payments, ownership interests , and real property usage rights is not counted.
- Lump sum is not counted.

Non-Financial Eligibility Standards

- Disregard: *5% FPL Deduction depending on the category of eligibility*
- Citizenship/Alien Status: *Mandatory Verification*
- Residency: *Self Attestation*
- Relationship: *Self Attestation*
- Age: *Self Attestation*
- Identity: *Self Attestation*
- Receipt of other benefits: *Mandatory Verification*
- Enumeration (SSN): *Mandatory Verification*
- Pregnancy: *Self Attestation*

* HSD will request verification if self attestation is questionable.

Financial Eligibility Standards



- Category 100 – Coverage for Other Adults
 - Income must be under 133% FPL*
- Category 200 – Parent Caretaker
 - Income must be under a fixed standard of need (47% of 2013 FPL*)
- Category 300 – Full Coverage for Pregnant Women
 - Income must be under 47% FPL*
- Category 301 – Pregnancy Services Only
 - Income must be under 250% FPL*
- Category 400 - Medicaid for Children
 - Income must be under: Children ages 0-5 0%-240% FPL*
Children ages 6-18 0%-190% FPL*
- Category 420 - Children's Health Insurance Program (CHIP)
 - Income must be under: Children ages 0-5 240%-300% FPL*
Children ages 6-18 190%-240% FPL*

*FPL = Federal Poverty Level

Disregard

- Deductions such as earned income disregard and childcare disregard are no longer applicable
- A disregard of 5% of the current FPL, according to the individual's budget group size, will be given according to the ACA related category of eligibility criteria.

2014-2015 Disregard	
Budget Group Size	Disregard 5% of Federal Poverty Level
1	\$48.65
2	\$65.55
3	\$82.50
4	\$99.40
5	\$116.30
6	\$133.25
7	\$150.15
8	\$167.05
+1	\$16.90

Health Insurance Exchanges-Marketplace/ NMHIX

Applicants who are ineligible for coverage under Medicaid can contact the New Mexico Health Insurance Exchange at:

Email: NM HIX WWW.bewellnm.com

Phone: 1-855-99NMHIX

How do I know which option (Medicaid or other health insurance) I could be eligible for?

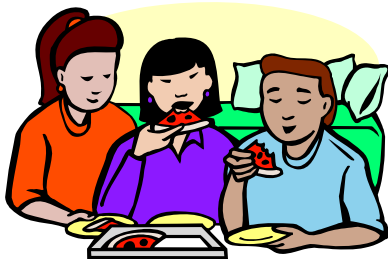
	Medicaid (go to HSD)	HIX (go to NMHIX)
Healthy Adults	Less than \$2,611.00	\$2,611.00 or more
Children Ages 0-5	Less than \$5,888.00	\$5,888.00 or more
Children Ages 6-18	Less than \$4,710.00	\$4,710.00 or more

Based on a family size of four and estimated countable gross monthly income



SNAP

Supplemental Nutrition Assistance Program



SNAP Guidelines



- ✓ 165% of the Federal Poverty Guidelines for the number of people in the household
 - Excluded: In-Kind, Loans, Educational Loans, Reimbursements, etc.
 - Deductions: Standard Based on Household Size, 20% Earned Income, Dependent Care, Child Support, Medical, Heating or Cooling, and Shelter Cost
- ✓ Assets are not counted
- ✓ If they have children under the age of 18, they are not required to participate in any Work Requirement activities
- ✓ If they only have children 18 and older, Employment and Training activities are mandatory unless an exemption applies
- ✓ College Students are not eligible for SNAP unless they meet one of the following exceptions
 - Exceptions: Disabled, working 20 hours a week, TANF, Work Study, etc.

SNAP- Supplemental Nutrition Assistance Program

Basic SNAP Rules

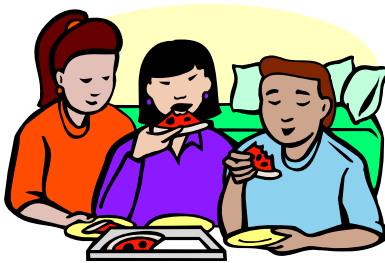
- ✓ You must have proper identification
- ✓ You must be a U.S. citizen or a qualified lawful resident
- ✓ You will have to list who lives and eats with you (your household)
- ✓ You will have to provide information about how much money your household receives each month from everyone in the household who eats with you.
- ✓ You will have to provide information about what your household pays for things like rent, utilities and child care.
- ✓ Work program participation is required for some SNAP recipients



Expedited SNAP

Some household may receive Expedited SNAP in as soon as seven days if:

- ✓ They have very little or no money;
- ✓ Their shelter costs are more than the money you earn;
- ✓ The household consists of a migrant worker.



Income guidelines SNAP / Food Assistance



Income Eligibility Guidelines for SNAP & Financial Assistance

Supplemental Nutrition Assistance Program - SNAP November 1, 2013 – September 30, 2014					
House- hold Size	Federal Poverty Guidelines (FPG) Monthly Income Standards			Maximum SNAP Monthly Allotment	LIHEAP 150% FPG
	100% FPG Net Income	130% FPG Gross Income	165% FPG Gross Income for Categorical Eligibility		
1	\$958	\$1,245	\$1,580	\$189	\$1,437
2	\$1,293	\$1,681	\$2,133	\$347	\$1,940
3	\$1,628	\$2,116	\$2,686	\$497	\$2,442
4	\$1,963	\$2,552	\$3,239	\$632	\$2,945
5	\$2,298	\$2,987	\$3,791	\$750	\$3,447
6	\$2,633	\$3,423	\$4,344	\$900	\$3,950
7	\$2,968	\$3,858	\$4,897	\$995	\$4,452
8	\$3,303	\$4,294	\$5,450	\$1,137	\$4,955
+ Each Person	+\$335	+\$436	+\$553	+\$142	+\$503
Minimum Allotment \$15 effective from 11/1/2013 through 09/30/2014					
<u>DEDUCTIONS:</u>					
<ul style="list-style-type: none"> ◆ Standard Deduction: For HH size 1-3 = \$152; 4 = \$163; 5 = \$191; 6 or more = \$219 ◆ Excess Shelter Deduction Limit: \$478 ◆ Heating and Cooling Standard Utility Allowance: \$314 (HCSUA) – Limited Utility Allowance: \$ 123 (LUA) ◆ Telephone Standard: \$33 ◆ Dependent Care: Actual Amount (No Limit) ◆ Earned Income Deduction: 20% ◆ Homeless Shelter Standard: \$143 					



Cash Assistance



Cash Assistance Guidelines

- ✓ 85% of the Federal Poverty Guidelines based on the number of people in the household
 - Excluded: Loans, Educational Loans, SSI Monies, Foster Care, etc.
 - Deductions: Dependent Care and Earned Income Disregards
- ✓ 1,500 liquid asset limit and 2,000 non-liquid asset limit
 - Examples of resources include:
 - Liquid: Cash, Stock, Bonds, CDs, etc.
 - Non-Liquid: Other Homes, Other Lands, RVs, Trailers, Boats, etc.
 - Excluded: Vehicles, Primary Home and Land on Which the Primary Home Resides, Income Producing, etc.
- ✓ Parents approved for TANF are required to participate in work activities
- ✓ The number of hours depends on whether it is a one parent or two parent household
- ✓ College Students are not eligible for TANF unless they are a parent

Types of Cash Assistance

- ✓ **TANF** (Temporary Assistance for Needy Families) provides a monthly cash benefit to be used to meet basic family needs such as housing, utilities, and clothing costs.
- ✓ **General Assistance (GA)** is a limited state-funded program that provides financial assistance to children and disabled adults.



Income Guidelines for Cash Assistance

Cash Assistance & Support Services November 1, 2013 – September 30, 2014						
House- hold Size	Federal Poverty Guidelines (FPG) Monthly Income Standards			Maximum Monthly Benefit		
	100% FPG Limit	85% FPG Gross Limit	NM Works Cash Net Income	15% NMW Budgetary Adjustment*	Maximum Monthly Benefit	General Assistance
1	\$958	\$814	\$266	\$39	\$227	\$245
2	\$1,293	\$1,099	\$357	\$53	\$304	\$329
3	\$1,628	\$1,384	\$447	\$67	\$380	\$412
4	\$1,963	\$1,669	\$539	\$80	\$459	\$496
5	\$2,298	\$1,953	\$630	\$94	\$536	\$580
6	\$2,633	\$2,238	\$721	\$108	\$613	\$664
7	\$2,968	\$2,523	\$812	\$121	\$691	\$748
8	\$3,303	\$2,808	\$922	\$138	\$784	\$849
+ 1	+\$335	+\$285	+\$91	+\$14	+\$77	+\$84
DEDUCTIONS			WORK INCENTIVES			
Dependent Care: For a child under age 2 = \$200 For a child age 2 and over = \$175			Earned Income Disregard: Single parent = \$125 & 1/2 remainder Two-parent = \$225 & 1/2 remainder			
			*15% Budgetary Adjustment is subtracted from the eligible NMW amount to determine maximum monthly benefit.			



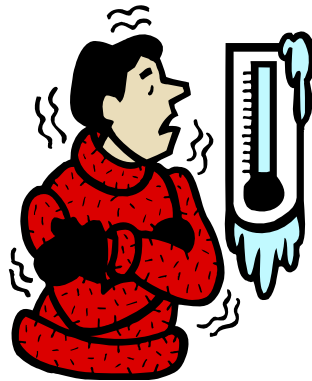
Energy Assistance



Energy Assistance

Low Income Home Energy Assistance Program

LIHEAP assists persons and families with their heating and cooling costs.



Income Guidelines / Energy Assistance

NM LIHEAP Proposed Income/Points Guide FFY 2014

October 2013 - September 2014

Household Eligibility

- Heating or Cooling Expense
- Reside in New Mexico
- US Citizenship or
Qualified Immigrant
- Identification
- Social Security Number
- Income no more than
150% of Poverty

Income Eligibility - 150% of Poverty

Household Size	Monthly	Annual
1	\$ 1,437	\$ 17,244
2	\$ 1,940	\$ 23,280
3	\$ 2,442	\$ 29,304
4	\$ 2,945	\$ 35,340
5	\$ 3,447	\$ 41,346
6	\$ 3,950	\$ 47,400
7	\$ 4,452	\$ 53,424
8	\$ 4,955	\$ 59,460
Each +	\$ 503	\$ 6,036



Resources

HSD Resources



<http://www.hsd.state.nm.us/>

<http://www.hsd.state.nm.us/isd/policies/>

Customer Service Center

1-800-283-4465

841-6700

